

TP340

Project

Burlington Gate

Mayfair
London



thermotec



Contractors / Partners



MULTIPLEX

Project

Burlington Gate

Mayfair
London



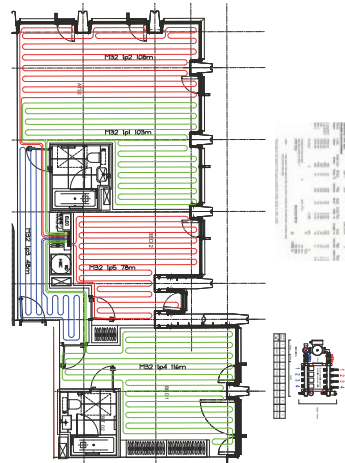
Project Brief

In consultation with Essex Services Group PLC, Thermotec were asked to provide a complete design and installation scheme, in compliance with the latest environmental and technological heating systems.

Scope of Works

Thermotec delivered a fully integrated floor build up system using our TPA13 Moulded Board Pre-grooved system with a BMS control system throughout 42 apartments. The project was managed, installed and supervised by Thermotec, and was delivered on time and within budget.

Project Value: £250M



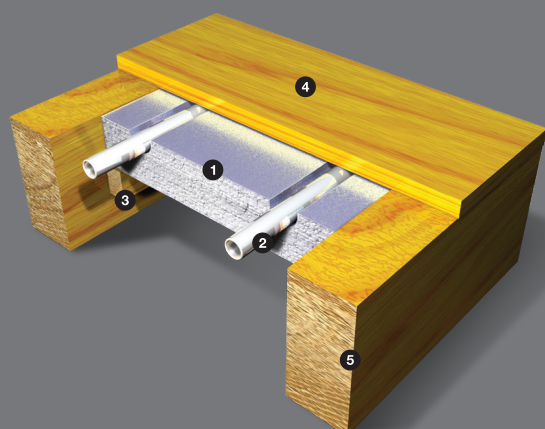
Project Details

Burlington Gate has redeveloped the existing 83,000 sq ft commercial building into 42 high quality design-led residential luxury apartments. Undergoing to the highest of international standards, Burlington Gate has brought a new perspective, centred around the first new arcade in Mayfair since 1930, with features of exceptional detailing and innovative styling, inspired by Mayfair's rich cultural heritage and contemporary scene.

6,000 m2



thermotec



Aquafloor Installation

- 1 Moulded and foiled EPS insulation
- 2 Aquafloor heating pipe
- 3 Timber support batten
- 4 Timber floor
- 5 Timber floor joists



Unsurpassed in logistics
and project planning.
Assured quality installations
for the mechanical and
electric sector.

thermotecuk.com