

TP341

Project

One Blackfriars

Bankside
London



thermotec



Contractors / Partners



MULTIPLEX



Project

One Blackfriars Bankside London



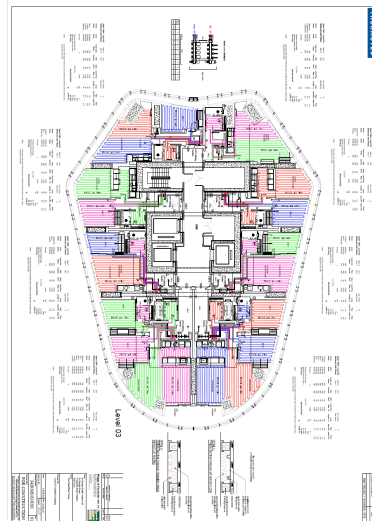
Project Brief

In consultation with St George, Thermotec were asked to provide a complete design and installation scheme, in compliance with the latest environmental and technological heating systems.

Scope of Works

Thermotec delivered a fully integrated floor build up system from the sub-floor base to the final floor screed using our TPA11 Aquafloor Cliprail and TPA15 Aluminium Plate underfloor heating systems and insulation using standard thermostats. In addition to this we also provided TPS15 Intawall heating mats in bathroom and ensuite areas. The project was managed, installed and supervised by Thermotec, and was delivered on time and within budget.

Project Value: £140M



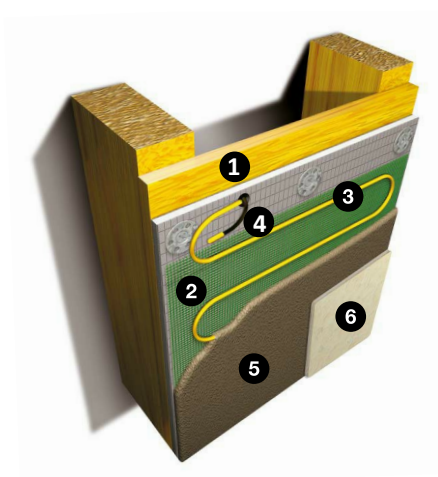
Project Details

One Blackfriars is amongst the tallest residential developments in Europe and is already gaining recognition for what is truly impressive icon on the London skyline. One Blackfriars is a beacon of architectural brilliance. Rising 50 storey and designed by award winning Ian Simpson Architects, it adds a shimmering new dimension to London's skyline with a fashionable mix of retails, restaurants and bars. Envisaged as an awe-inspiring sculpture looking down on the River Thames, the 170-metre high tower with 274 apartments is ideally placed to embrace London's rich cultural life on the South Bank.

74,925 m²

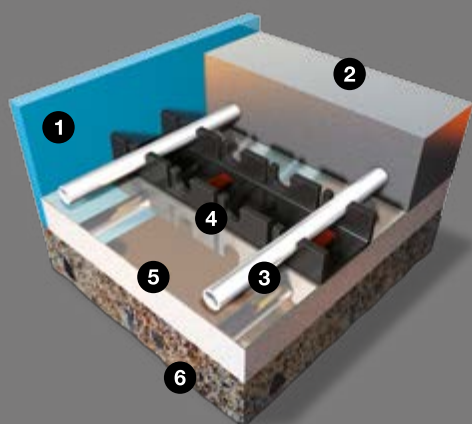


thermotec



Intafloor Installation

- 1 Plywood
- 2 Intawall Mat
- 3 Cable
- 4 Sensor
- 5 Tile Adhesive
- 6 Tiles



Aquafloor Installation

- 1 Expansion edging strip
- 2 Screed minimum 65mm
- 3 Aquafloor heating pipe
- 4 Heating pipe rail
- 5 Foil faced insulation min 25mm
- 6 Solid sub-floor



**Unsurpassed in logistics
and project planning.
Assured quality installations
for the mechanical and
electric sector.**

thermotecuk.com