

TP347

**Project**

**Principal Place**  
Shoreditch  
London



thermotec



**Contractors / Partners**



**Briggs & Forrester**  
GROUP

**MULTIPLEX**

## Project

### Principal Place

Shoreditch  
London



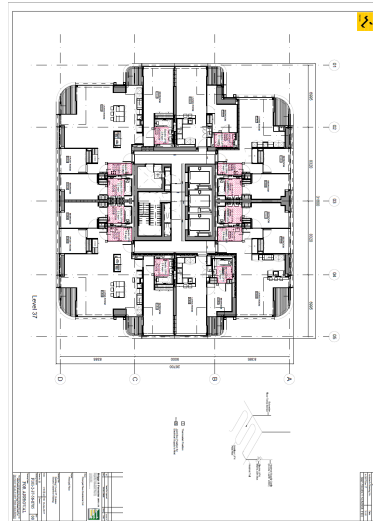
#### Project Brief

In consultation with Briggs & Forrester (MEP) Ltd and Multiplex, Thermotec were asked to provide a complete design and installation scheme, in compliance with the latest environmental and technological heating systems.

#### Scope of Works

Thermotec delivered a fully integrated floor build up system from the sub-floor base to the final floor screed using our TPA11 Aquafloor Cliprail underfloor heating system. We also installed TPS10 Supafloor electric screed cable to all washroom facilities. The project was managed, installed and supervised by Thermotec, and was delivered on time and within budget.

**Project Value:** £180M



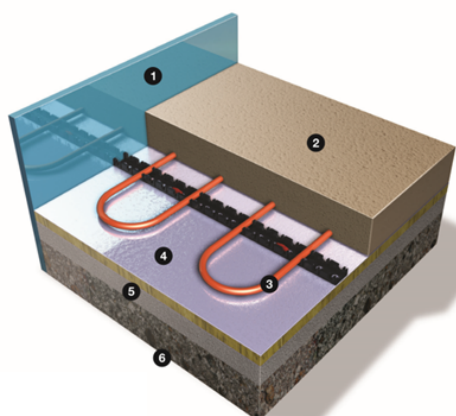
#### Project Details

Principal place is a new destination where the city meets Shoreditch. developed by Brookfield and designed by foster & partners, home to amazon from 2017. principal place also features 20,000 sq. ft of restaurants, shops and a boutique gym and a vibrant half-acre public piazza to be activated by year round arts & events program. . It provides over 600,000 sq ft of office space, 18,200 sq ft of retail space and other luxury facilities.

76,530 sq. m

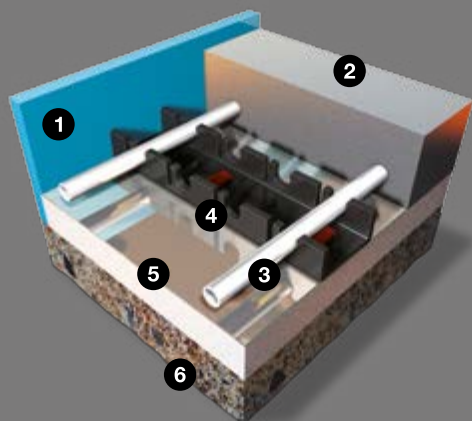


**thermotec**



#### **Supafloor Installation**

- 1 Expansion Edging Strip
- 2 Screed
- 3 Supafloor 20 Cable
- 4 Foil faced Insulation
- 5 Solid Sub-floor
- 6 Consolidated Hardcore



#### **Aquafloor Installation**

- 1 Expansion edging strip
- 2 Screed minimum 65mm
- 3 Aquafloor heating pipe
- 4 Heating pipe rail
- 5 Foil faced insulation min 25mm
- 6 Solid sub-floor



**Unsurpassed in logistics  
and project planning.  
Assured quality installations  
for the mechanical and  
electric sector.**

**thermotecuk.com**